

## ADSL [PPPoE] - Mac os X

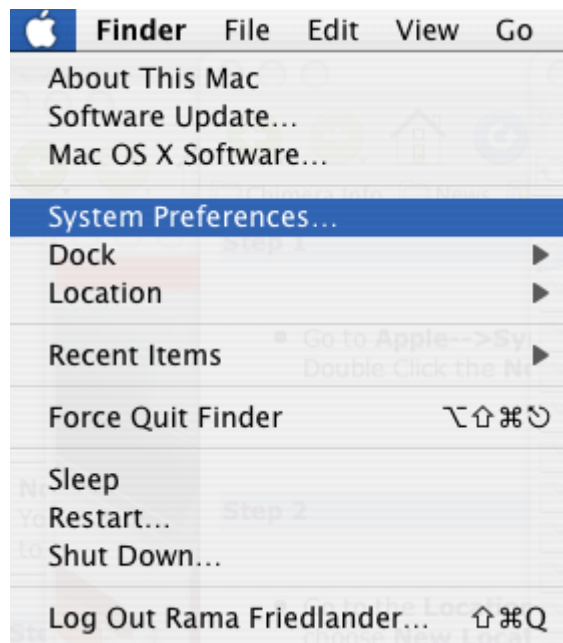
### Modems: Samsung, ECI

#### Notes:

- You need to have a TDCNet account and password.  
The Account should something like  
someuser@tordata.net.

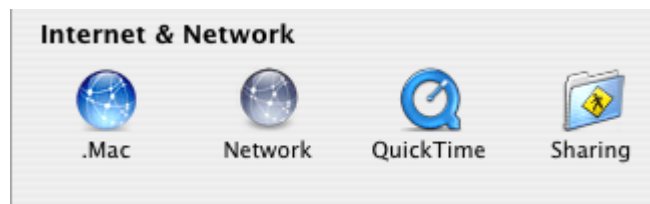
#### Step 1

- Click the Apple icon.
- Choose System Preferences



#### Step 2

- Click Network



### Step 3

- Choose New Location... Under Location.
- Click Next

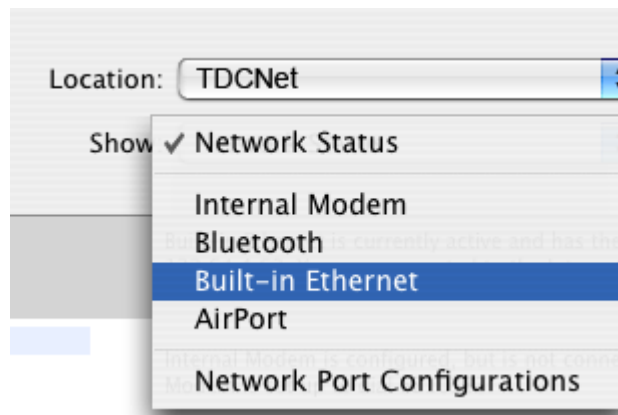
### Step 4

- Type a name for your new location, such as: TDCNet
- Click OK.



### Step 5

- Choose Built-in Ethernet under Show.



### Step 6

- Click the PPPoE tab.

The screenshot shows a network configuration window with the following elements:

- Location: TDCNet
- Show: Built-in Ethernet
- Navigation tabs: TCP/IP, PPPoE (selected), AppleTalk, Proxies, Ethernet
- Connect using PPPoE
- Service Provider: (Optional)
- Account Name:
- Password: (masked with dots)
- PPPoE Service Name: (Optional)
- Save password  
Checking this box allows all users of this computer to access this Internet account without entering a password.
- PPPoE Options...
- Show PPPoE status in menu bar
- Buttons: Assist me..., Apply Now
- Footer: Click the lock to prevent further changes.

- In the Account Name: field type your username@tordata.net
- In the password field fill your password
- Click Apply Now.

### Step 7

- Click the network icon from the top-right corner of your screen.
- Click Connect/Disconnect.

